

[Limited-time Mass Production Specification Notice Control Standard]

【Core】 (excludes automobile)

1 General Provisions

1.1 Purpose

The purpose of this standard is to ensure operations of judgements, applicable control, etc. in regards to correspondence through limited-time mass production specification notice by defining the basic requirements relating to the limited-time mass production specification notice the facility issues.

1.2 Scope

This standard applies to operations from issuance of limited-time mass production specification notice to its completion of application.

1.3 Terms and Definitions

The terms and definitions used in this standard are as follows:

No.	Term	Definition
1	limited-time mass production specification notice	Notice of applicable changed contents issued by the facility to the related sections for a limited time when immediate specification change becomes necessary in manufacturing after mass production drawing issuance and does not apply to the usage criteria of neither mass production specification notice nor prior mass production specification notice.
2	C1, W1 Global Control System	System that controls the issuance and application status of pre-mass production specification notice and limited-time mass production specification notice.
3	the R&D in charge	R&D that has specification responsibility
4	contact R&D	R&D closest to the facility that supports both facility and R&D.

2 System

2.1 Management System

2.1.1 The control system related to limited-time mass production specification notice is outlined in Attachment-1 “【Motorcycle, Power Products】 Control System of Limited-time Mass Production Specification Notice (when applicable to paragraph 4.1.1)” and Attachment-2 “【Motorcycle, Power Products】 Control System of Limited-time Mass Production Notice System (when applicable to paragraph 4.1.2, 4.1.3).”

2.1.2 The person responsible for every operation in the “Control System of Limited-Time Mass Production Specification Notice” is the head of the section in charge of the applicable operation.

2.2 Roles, Responsibilities

2.2.1 The basic roles, responsibilities are as follows:

- (1) When the facility judges correspondence with limited-time mass production specification notice is necessary, it issues it upon deciding the changes and applicable contents.
- (2) The facility produces the products based on contents of the limited-time mass production specification notice.
- (3) The facility investigates and analyzes contents that require investigation of causes, discusses the necessity of specification change with R&D and, upon necessity, issues countermeasure request form e.

2.2.2 The person responsible for the issuance of limited-time mass production specification notice and its application is the quality representative or the person the quality representative delegated its authority to.

3 Prohibition

3.1 Prohibition of Application

The following items cannot be corresponded with limited-time mass production specification notice.

- (1) Items relating to regulations (those judged applicable by the certification section)
- (2) Items related to certification (those judged applicable by the certification section)
- (3) Items related to critical safety parts (items of which functions will change; change judgement is discussed with R&D)
- (4) Market quality problem related items (applicable A rank items defined in G-HQS [Market Quality Information, etc. Handling Standard] or items of market action)
- (5) Items requiring submission of change notification to relating organization (national agency, etc.)
- (6) Items influencing maintenance or service in the market

4 Voucher

4.1 Voucher Criteria

Facility may correspond with limited-time mass production specification notice if it does not apply to paragraph 3.1, but does to the following:

New and old versions are to be interchangeable.

4.1.1 When it does not require issuance of new mass production specification notice due to:

- (1) usage of old parts for stock arrangement
- (2) arrangement of parts with specified tolerance within drawing instruction or appended parts of measuring data for quality control

- (3) the necessity of drawing correspondence for application of concession parts
- (4) prior confirmation of those not applicable for selling
- (5) Others

4.1.2 When mass production specification notice or prior mass production specification notice is issued, or waiting to be issued (times such as mass production specification notice number is acquired beforehand):

- (1) correspondence is required until the specification change is applied, for example
 - when partial applications are conducted beforehand, when several different specification changes occur
 - when corresponding with a different manufacturing method than drawing instructions, etc.
- (2) application order of specification change will differ from the drawing revision

4.1.3 When immediate correspondence is required for investigation, analysis and countermeasure promotion for problems of usability.

4.2 Voucher Issuance

4.2.1 The quality control section issue vouchers for documents, etc. of limited-time mass production specification notice.

4.2.2 If any case applies to either paragraph 4.1.2 or 4.1.3, vouchers are issued for documents, etc. upon generally, notifying R&D of corresponding with limited-time mass production specification notice. Specify both the name of the person in charge of design at R&D and applicable item number of voucher criteria.

4.2.3 The quality control section adjusts with the related facilities, upon necessity, if contents of limited-time mass production specification notice are related to other facilities.

4.2.4 The quality control section, upon necessity, confirms the certification related judgement at the stage of considering measures with the certification section of the facility that acquired certification.

The facility that acquired certification discusses and decides with the certification section of Honda Motor Co., Ltd. on which one of them will make certification related judgements.

4.2.5 Forms are to be used upon specifying “LIMITED” on “MASS PRODUCTION SPEC. NOTICE” (hereinafter referred to as “M.S. Notice”).

4.2.6 The parts number based on this standard is in accordance to “Parts Number Standard HES H 032 Manufacturing Prototype Parts.”

5 Issuance

5.1 Confirmation and Approval

- 5.1.1 Confirmation of limited-time mass production specification notice contents is conducted by the responsible person of the quality control section or the person the responsible person delegated its authority to.
- 5.1.2 The quality control section records the certification related judgement of limited-time mass production specification notice contents after the certification section of the facility that acquired certification confirms the contents.
- The facility that acquired certification discusses and decides with the certification section of Honda Motor Co., Ltd. on which one of them will make certification related judgements.
- 5.1.3 The quality control section obtains approval from the quality representative or the person the quality representative delegated its authority to (head of the quality control section, etc.) on the issuance of limited-time mass production specification notice.
- 5.1.4 Following points are to be taken into consideration when making judgements of confirmation and approval:
- (1) Necessity of corresponding with limited-time mass production specification notice (includes confirming scope, voucher criteria and deviation from prohibiting matters)
 - (2) Validity of specification changed contents (influence on quality, cost, production engineering, product engineering, common models, service, etc.)
 - (3) Certification related judgements

5.2 Processing of Issuance

- 5.2.1 The specification control section establishes a control number of limited-time mass production specification notice and issues them to the related section (includes related facilities)
- 5.2.2 The quality control section registers the contents of limited-time mass production specification notice (M.S, drawings, parts list) into C1, W1 global control system.
- If C1, W1 global system is yet to be introduced, request system registration to Kumamoto factory of Honda Motor Co., Ltd.
- 5.2.3 The specification control system stores the applicable original documents for the length of period as defined by the document retention regulation.

6 Application

6.1 Application Control

Specification control section controls the limited-time mass production specification notice contents and its application date, vehicle number and engine numbers, etc.

6.2 Control of items applicable to paragraph 4.1.3 of this standard

6.2.1 The quality control section analyzes the causes of items applicable to paragraph 4.1.3 of this standard and determines the measures within 3 months from the issuance of limited-time mass production specification notice.

Upon necessity, request analysis support from R&D.

6.2.2 The quality control section notifies R&D of the analyzed result, discusses the necessity of specification change and upon necessity, issue the countermeasure.

6.2.3 The quality control section confirms the progress of items that decided specification change with R&D.

6.2.4 The quality representative or the person the quality representative delegated its authority to (head of the quality control section, etc.) determines future promotion upon discussing with the related sections, once the decision of countermeasure contents is determined to exceed 3 months from the issuance of limited-time mass production specification notice.

6.3 Completion of Application

6.3.1 The quality control section, when abolishing the contents of limited-time mass production specification notice, instructs the specification control section.

6.3.2 The specification controls section that received the instructions, issues the abolishment instruction notice to the related sections (includes related facilities).

6.3.3 The quality control section updates the registered contents of C1, W1 global control system based on contents of abolishment instruction notice (M.S. Notice, parts list).

If C1, W1 global system is yet to be introduced, request system registration to Kumamoto factory of Honda Motor Co., Ltd.

7 Supplementary Provision

7.1 Related Standards

Other related standards are as follows:

- (1) G-HQS [Specification Change Control Standard] F 1302-1
- (2) G-HQS [Pre-Mass Production Specification Notice Control Standard] F 1302-2

7.2 Designation of Control Forms

The following forms used based on this standard are to be designated as control forms.

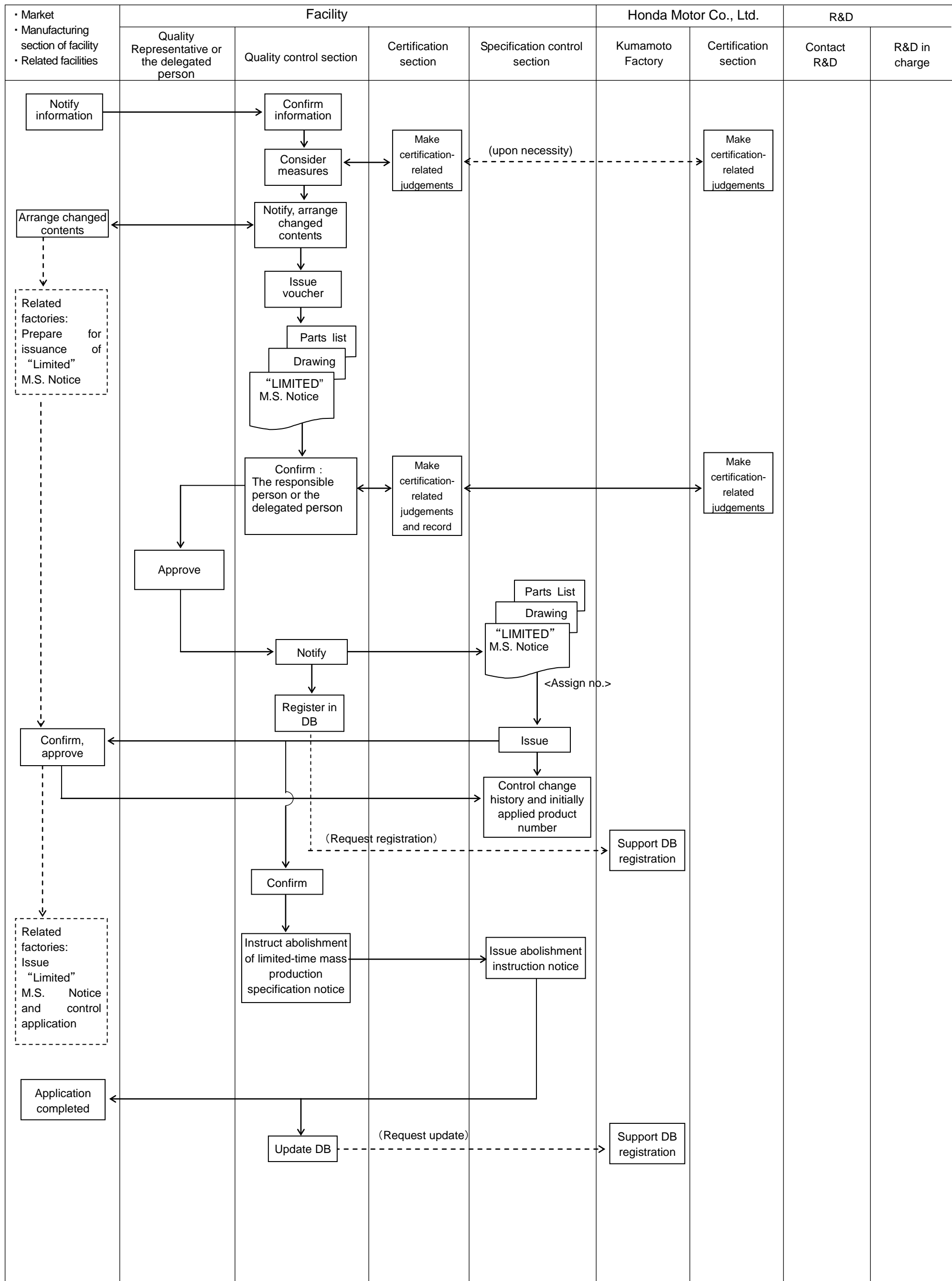
- (1) Countermeasure Request [Countermeasure Request Form] (Refer to “Attachment-2” of 【Core】 in G-HQS [Specification Change Control Standard])
- (2) MASS PRODUCTION SPEC. NOTICE (Refer to “Attachment 4” of 【Core】 of G-HQS [Specification Change Control Standard])

7.3 Application

Matters relating to the establishment, revision or implementation of this standard are outlined in G-HQS [Quality Management Standards Control Standard].

7/9

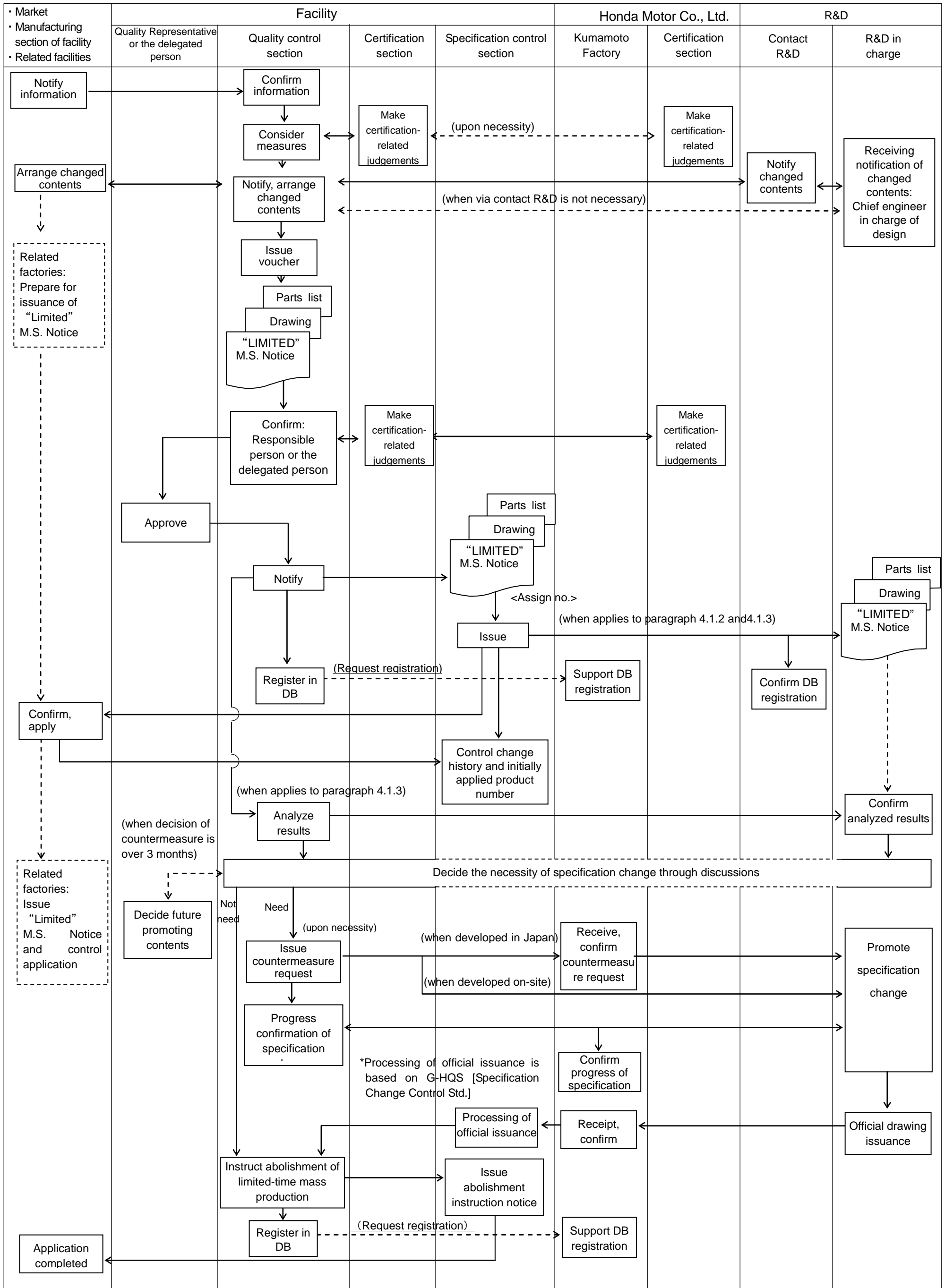
(when applicable to paragraph 4.1.1)



【Motorcycle, Power products】 Control System of Limited-time Mass Production Specification Notice

Attachment-2 (related to Core 2.1)

(when applicable to paragraph 4.1.2)



[illegible]